

FB780-T



Medium Format B2 Digital-Die Flatbed Cutter/Creaser

Dual tool head, featuring an Active Tangential Wheel Creaser partnered with a passive contour blade tool for exceptional cutting & creasing



- QR code driven jobs
- Media edge detection
- Process thicker media
- Productive fast output
- Clean/crisp crease
- Immersive operation
- Cut without cables
- Direct Drive - cut from USB

colorcut FB780-T

High force/superfast B2 cutter/creaser

Plockmatic Group

intec
colorcut

T-SERIES - Cut Thicker/Cut Faster!™

Powerful 2.5kg Tangential Crease | more media options

Cut and crease absolutely any shape!

colorcut FB780^T B2 Tangential digital flatbed cutter/creaser

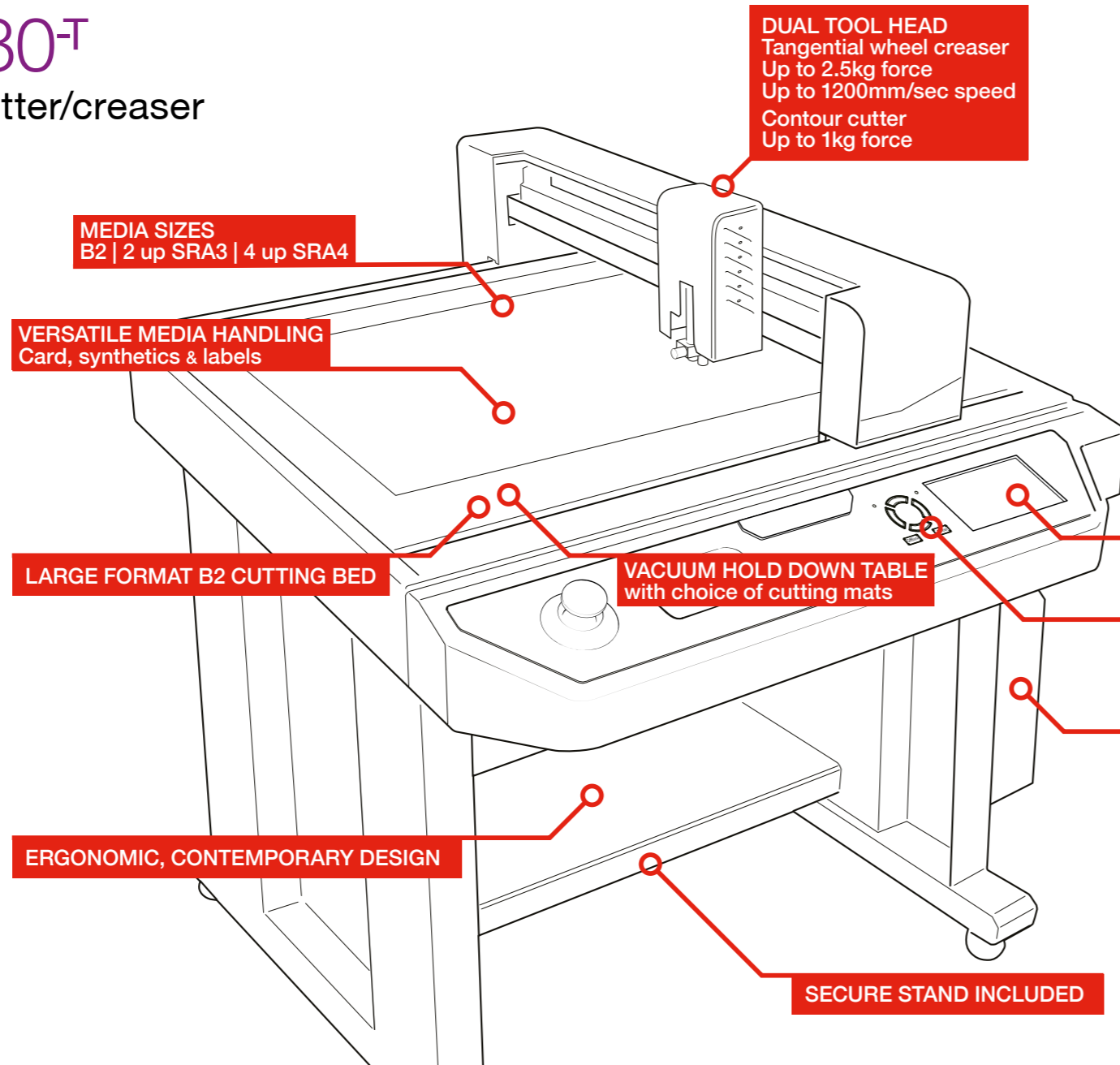
The NEW FB780^T is the world's first B2 flatbed cutter with the ultimate crease and precision cutting for any die-cut application.

This compact designed cutting table includes 2 tools; a impressive **2.5kg Active Tangential Creasing Wheel** and Passive Contour Cutting tool combined with a powerful vacuum system and high speed performance, the FB780^T is ideal for on demand, small to medium production runs of two and three dimensional items.

This powerful and accurate device can cut and crease virtually any form of print, from sample and prototype packaging for high-end products and protective cartons to synthetic point-of-sale items and kiss-cut adhesive labels/stickers.

With our combined industry leading ColorCut Pro software, the FB780^T brings many advanced features to aid design and production.

ColorCut T-Series a new industry standard. Designed in the UK, beautifully engineered, totally accurate and highly affordable.



PRODUCT OVERVIEW

B2 medium format flatbed cutting table with a dual tool head, which has **two independant tools in the carriage head** including a **passive** contour/drag cut tool and an **active tangential crease wheel tool**.

A dual tool head enables users to complete two actions in 1 operation; for example CUT and CREASE. The combination of an Active tool and Passive tool enables a **wider range of media to be cut, creased or perforated** on this **highly specified**, yet incredibly affordable **digital flatbed**.

No learning curve, nothing new to learn. The simple and intuitive ColorCut Pro 5 software, that is supplied with the FB780^T, enables you to work directly with the leading graphic design applications; Adobe® Illustrator® or CorelDRAW® enabling you to use the design software you already know.



PRIMARY FEATURES

Dual tool head - includes Passive drag and Active crease tangential tools for a truly versatile media capability.

Highly productive - high speed and high pressure cut and crease, for prototyping of singles or multi-sheet 2/4 up rapid production for more jobs.

QR driven jobs - instantly & automatically finds cut files.

Standalone production - the 'NO WIRES' file system. Load jobs from a USB drive, view and display jobs on the large touch screen, select them by name, or simply auto-select the correct cut file and cut the job by pressing the SCAN button. One million job capacity.

Reverse Side - patented technology enables you to scan marks on the front of your sheet, flip the sheet over and cut and crease from the rear - offering more cutting and creasing options depending on media selection.

Vacuum hold down - includes a powerful 750W vacuum system with acoustic muffler that keeps cut pieces firmly in place, for fast and accurate processing, yet provides a quiet & comfortable operating environment.

WHAT IS TANGENTIAL?

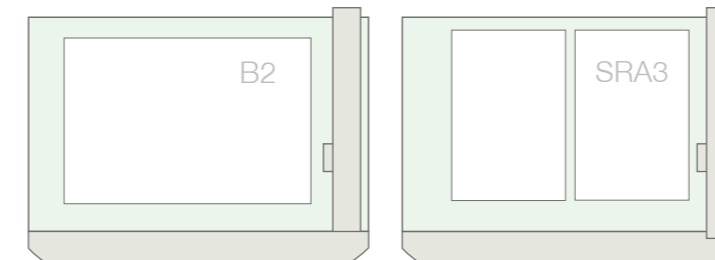
The **tangential** crease wheel is an active tool where the direction of the wheel is controlled by a motor. Tangential technology enables the FB780^T to use a larger wheel with higher pressure for smooth creasing. The FB780^T lifts the creasing wheel up from the media, rotates it and lowers it back onto the media providing deeper, crisp creasing on thicker stocks.

In contrast, a **passive** contour knife remains in the media during cutting, which enables faster cutting capabilities as the blade passively rotates as the carriage follows your cutting path.

MEDIA COMPATIBILITY

Folding box board, SBS, SBB and sheet card
Paper, rice paper
Synthetics and polymers
Sheet labels and vinyls
Magnetic media
and more!

SINGLE OR MULTIPLE JOB PROCESSING



Dual tool head - includes one passive contour tool for fast cutting, and one active tangential crease tool enabling production on thick media

High speed up to 1200mm/sec, with high force crease up to 2,500gf

Powerful vacuum fan with silencer - for full, no-slip media hold down of jobs

QR code driven standalone operation - run jobs from USB drive



Tools & accessories

DUAL TOOL HEAD

Dual tool head includes passive contour/drag cut, with active tangential creasing wheel. The digital cutting head can apply force, individually, for both the cutting and creasing tools.

This combination of tools provides a much wider media handling capability and more defined crease for thick card up to 800* micron. The individual tool actions are controlled via the included ColorCut Pro 5 Production Studio software.

In common with the entire ColorCut family, the FB780^T can be set to apply exact amounts of pressure and speed, along with total control over the application of cut, crease, perforation or kiss-cut of vector artwork lines drawn in Adobe® Illustrator® or CorelDRAW®.

CREASING TOOLS

- Active Tangential creasing wheel. Incorporates magnetic positioning assist, for easy change-over of crease tool.

CUTTING TOOL AND BLADES

- Passive contour/drag knife cutting tool
Drag blade set - included with standard and circlip blades in 30°/45° and 60° angles.
- *Optional active tangential blade for materials between 500 - 800 micron.



Active tangential creasing wheel tool and interchangeable wheel



Passive contour/drag cutting tool (blade holder)

SWIVEL/DRAW BLADES

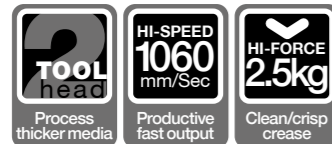
	2		30°	Yellow 30° 1mm ø - for film, very soft material, thin label material
	3		45°	Red 45° 1mm ø - typically for labels, stickers, and thin paper
	4		60°	Blue 60° 1mm ø - for hard media. The sharply angled tip provides a sharper point edge. Suitable for penetrating dense synthetic vinyl types

Blade legend:
 1. 45° tangential blade 2. 30° blade 3. 45° blade
 4. 60° blade 5. 45° circlip knife 6. 60° circlip knife

CIRCLIP BLADES

	5		45°	Red 45° 1.4mm ø - Most packing board up to 750 micron. Circlip provides better pressure and improves blade direction changes on dense media, from 0.25 to 0.75 mm thick
	6		60°	Blue 60° 1.4mm ø - For dense, rigid or thick media. Sharply angled tip provides a sharp point ideal for polyester, PVC or magnetic materials. 0.25 to 1.2mm

High force, rapid tool head
Dual tools including tangential creasing wheel



CALIBRATION TOOL

A pen calibration tool is provided for initial tool head set-up.



Pen calibration tool



Dual tool head for rapid cut and crease includes tangential capability

Standalone - NO WIRE job processing from a USB drive

QR job coding delivers mixed job functionality

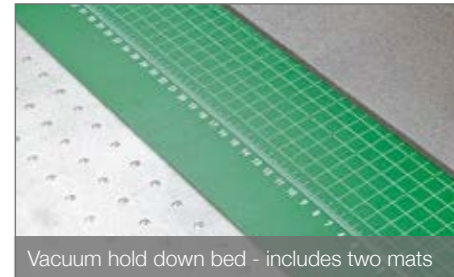
Immersive 7" touch screen control panel

Powerful, yet easy to use ColorCut Pro software included

FLATBED CUTTING TABLE

Sheets are held securely in place by the powerful 750W vacuum system included with the FB780^T.

A range of two cutting mats (included) complements the vacuum table, with the vacuum passing through the mats to the precision milled aluminium platen of the vacuum table, which ensure the sheets are flat and secure during cutting.



Vacuum hold down bed - includes two mats

VACUUM HOLD DOWN - FAN AND SILENCER

The powerful centrifugal air pump, creates the vacuum required for the hold down function. The fan is acoustically shielded by its housing and the system even includes a silencer, ensuring the vacuum system is un-obtrusive and enabling the FB780^T to be used in a normal office environment.



Acoustically housed, high pressure vacuum fan

CUTTING MATS

- Green self-healing mat for kiss-cutting.
- Superior grey felt mat for cut-through and crease.

ACCESSORIES

- Tools and accessories box includes:
- Tangential tool fitting kit and allen keys.



Acoustic silencer included with fan

ColorCut Pro Software



Cutting | Creasing | Scoring | Perforating | Kiss-cutting

Cut, crease, perforate and score card & labels
100% digital - no dies required



SOFTWARE

ColorCut Pro explained

ColorCut Pro consists of two parts, the first is the ColorCut Pro Client, a plug-in to Illustrator for Mac or PC creatives or to CorelDRAW (PC only). This enables designers/artworkers to generate cut files without the need to learn any new applications. The ColorCut plug-in also adds the ability directly into your graphics application to add both cut registration marks and QR codes with associated job numbers, easily, simply and as an integral part of the design process. It also saves each cut job into a ColorCut Pro job library for instant retrieval at any time, now or in the future.

Adding the QR codes and job numbers, is a key part of the ColorCut Pro magic, with QR codes the FB780-T is able to retrieve previously prepared cut files without the need to launch Adobe® Illustrator® or CorelDRAW®. In fact this means, that after a graphic designer has sent the job to print in a production print environment, any user can collect the sheets from the printer and cut them without needing to trouble the graphic designer to ask what cut file to use, or where it is stored.

CUT BY COLOUR

Colour recognition

ColorCut Pro makes cutting jobs simple. It is easy to set-up cutting, perforating, scoring, kiss-cutting and creasing processes by using different colours in the design.

ColorCut recognises different colours in the cut file allowing users to assign different operations, or the order in which they are performed. Another key advantage is colour assignment can be changed (if your customers use different colours).

AUTO SCAN QR CODE AND REGISTRATION MARKS

Cut file acquisition and job placement

The in-built camera on the FB780-T reads the QR code on each printed sheet and automatically retrieves the associated cutting file from the ColorCut Pro Job Library.

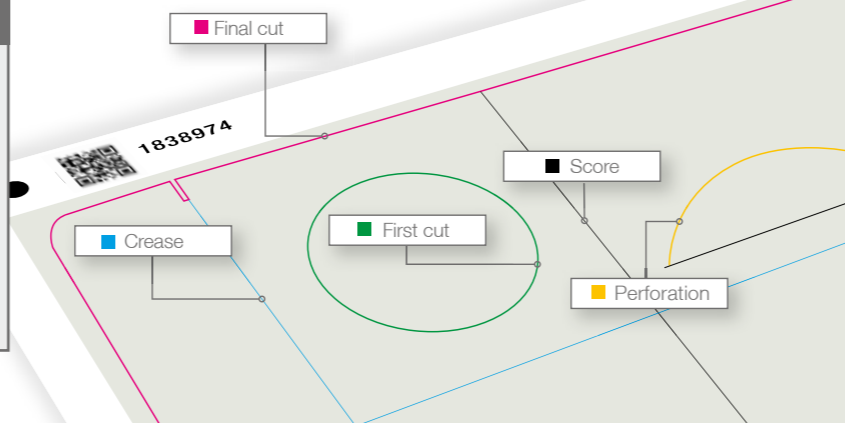
Additionally the camera reads the registration SmartMarks placed in each corner of the sheet, for positional accuracy. Advanced features compensate for print skew or positioning skew to ensure precise cut registration.

QR DRIVEN WORKFLOW

Process single/multiple or mixed jobs in the same run

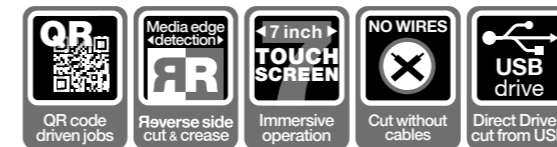
The QR workflow has massive benefits in that it will access the correct cut file for each job placed on the cutting table, this means you can have each job uniquely different from the next, enabling the processing of mixed jobs in one pass.

Assign processes by colour!

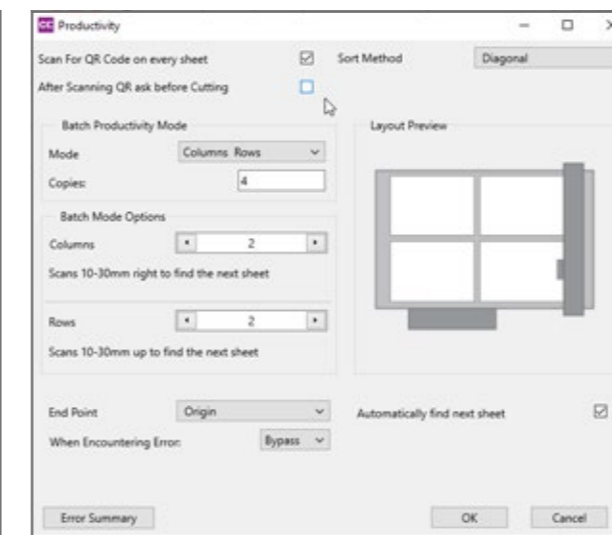


TOUCH SCREEN - CONTROL SURFACE

Large interactive and immersive 7" touch screen for easy operation and access to powerful functions and settings.



QR code scanning for instant job cut file retrieval



OPTIONAL EQUIPMENT

ColorCut Pro Server Station - seriously enhance your productivity!

Supplied complete with a pre-installed Windows® PC and ColorCut Pro software suite, with a flat screen monitor, mouse and keyboard. Also includes software licence for two additional user seats.

The Server Station is supplied with a pre-installed Windows® PC and ColorCut Pro software suite, with a flat screen monitor, mouse and keyboard

Production Studio is the core operating software

Template Maker enables designers to create simple cartons and shaped items

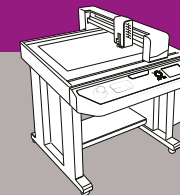
Job Library Manager sophisticated job management, with custom action assignment

User Licence allows 2 extra user seats



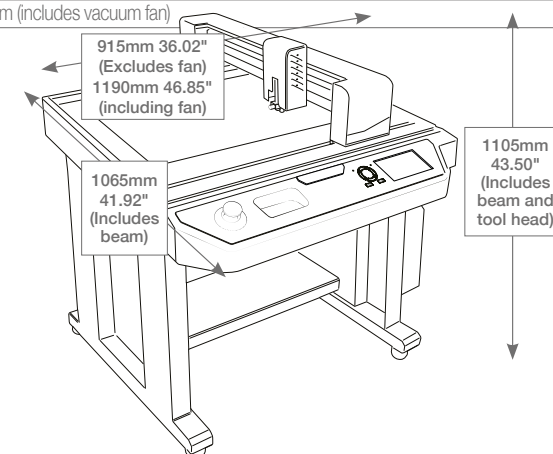


Technical Specifications



POSITION	
Format/Size	B2 (2 x SRA3 / 4 x SRA4) US ARCH E2 (2 x Tabloid Extra)
Market	Prototype and light production, on-demand packaging and sheet card cutting system – also suitable for sheet labels
CUT AREA	
Maximum media area	580mm x 800mm
Effective contour cutting area	480mm x 660mm
Stand	Included
Media hold-down method	750W Vacuum suction
Acoustic muffler / silencer	Included
CUTTING CONTROL	
Cutting carriage	Dual Tool (2 tool) configuration: 1 active (tangential) tool position and 1 passive (contour/drag)
Cutting force	CREASE: Tool position 1; Active Tangential Crease Wheel, up to 2,500gf (2.5kg) CUT: Tool position 2; Passive (Drag) Contour Knife, up to 1,000gf (1kg)
Max cutting depth	Paper/card up to 800micron. Maximum depth: 1,000micron (low density substrate i.e., rice paper / softboard) High Density Substrates: PVC - up to 0.4mm, PET - up to 0.3mm, magnetic sticker - up to 600µ
Max speed	High Definition: 750mm/s Standard Mode: 960mm/s Fast Mode: up to 1,200mm/s
Programmable resolution	HPGL 0.025mm
Typical cut accuracy	+/- 125 µ
Mountable tools	3 tools supplied as standard: Tangential creasing wheel, standard blade holder for drag knife (supported blades indicated below) & pen calibration tool
Blades (contour/drag)	1mm : Yellow - 30° cemented carbide blade - for thin film and very soft material
	1mm : Red - 45° cemented carbide blade - for adhesive stickers, thin card under 0.25mm
	1mm : Blue - 60° cemented carbide blade - for hard media. The sharply angled tip provides a sharper point edge. Suitable for penetrating harder media types (restricted by maximum limit of flatbed)
	1.4mm : Red - 45° circlip cemented carbide blade - for most packing board up to 750 micron. Circlip provides better pressure and improves blade direction changes on dense media, from 0.25 to 0.75mm thick
	1.4mm : Blue - 60° circlip cemented carbide blade - for dense, rigid or thick media. Sharply angled tip provides a sharp point ideal for polyester, PVC or magnetic materials. 0.25 - 1.2mm
Creasing tool (tangential)	Tangential wheel creaser: ≤500gsm cardboard, textured & corrugated paper
Pen holder	Pen, plotting pen, also used for calibration sensor

SOFTWARE & CONNECTIVITY	
File formats	ColorCut Pro (only). ColorCut Pro cut files are created using the ColorCut plugin (below).
ColorCut Pro 5 (Plug-in)	ColorCut Pro 5 Client (supplied) is a plugin for Adobe® Illustrator® (Mac or PC) & CorelDRAW® (PC only) (requires either app). Automatically adds cut registration targets (SmartMARKs), QR Codes and Job numbers to the cut files. Then creates the cut files and sends cut files to the ColorCut Pro Job Library. ColorCut Pro - Production Studio (supplied) (PC ONLY) is used to send cutting jobs to the cutter. ColorCut Pro - Production Studio can be installed on a standalone PC and will send cut files [†] from the ColorCut Pro Job Library (on same network LAN/WLAN as Graphic Design MAC's or PC's). <i>† The ColorCut Pro Job Library is a repository of cut files already created using ColorCut Pro Client MAC or PC (detailed previously).</i> Alternatively, ColorCut Pro Production Studio can also be installed on a Graphic Designer's PC to send cut files directly from a graphics application to the cutter.
ColorCut Pro 5 (Production Studio)	
Job identifier	QR Code &/or Job Number
ColorCut Pro 5 - (Plugin) compatibility	PC: Direct Plugin to: Adobe® Illustrator® CS6 / CC 2014 up to 2023, CorelDRAW® X8, 2017 - 2023 Graphics Suite. Mac: Adobe® Illustrator® CC 2022 up to 2023 Mac operating systems: Big Sur to Sonoma
ColorCut Pro - Production Studio Minimum PC requirements	Windows 10/11 Pro x64 bit. 8 GB of RAM, Quad Core Processor Recommended Resolution: 1280x960 or higher 1 x USB, or Wired Ethernet
REGISTRATION CONTROL	
Registration system	Advanced 8th generation ARMS (Automatic Registration Mark System), uses hi-res CCD camera system to read QR codes for instant job retrieval, also accurately reads registration marks, corrects linear, scale, skew and rotational/angular positional differences adapting the cut file as required.
POWER REQUIREMENTS	
Cutting Table - Power/Voltage (cutter)	200W, 3.0A , 110V 220V (voltage specific)
Power (vacuum pump)	750W, 110V / 16.5A (vacuum)
	750W, 240V / 9A (vacuum)
Approvals	Complies with CE and RoHS directive, VCCI Class A, EN55022 Class A
GENERAL	
Table weight (unpacked)	84.4kg (vacuum fan: 24.2kg)
Table dimensions (unpacked)	L 915 x W 1065 x H 1105mm
Fan dimensions	L 320 x W 615 x H 410mm
Weight (crated)	170kg includes vacuum fan
Dimensions (crated)	L 1532 x W 1147 x H 605mm (includes vacuum fan)



Intec Printing Solutions Limited
 Unit 11B, Dawkins Industrial Estate, Poole, Dorset BH15 4JP UK
 Tel: +44 (0) 1202 845 960
 Email: sales@intecprinters.com
www.intecprinters.com

